



The Castle School
ACHIEVE | BELONG | PARTICIPATE



BLACKDOWN
EDUCATION
PARTNERSHIP

GCSE Launch Evening Leavers 2027

ACHIEVE

BELONG

PARTICIPATE



Main Hall

Intro to Year 10, Mr Simpson:

- Calendar
- Events
- Priorities
- Success

Overview of core subjects:

- English, Mrs Whysall
- Maths, Mrs Sully
- Science, Mr Collings
- RE, Mrs Norris

Option A **6.45**

Child Development in N11

Computer Science and IT in J15

Design Technology and Engineering in N1

Drama and Dance in DBS studio - **7.15 only**

Fine Art and Textiles in T32

Food in T24

Geography in T14

History in T11

MFL French German Spanish in J5

MFL Mandarin in J3

Music GCSE and BTEC Music in J7

PE GCSE in J1 and BTEC PE in J2

Philosophy/Ethics/Religion in T16

Photography in T22

Option B **7pm**

Option C **7.15pm**



Calendar:

- Enrichment Days 7th & 8th Oct
- Year 10 I.A January
- Enrichment Days 21st and 22nd Jan
- Year 10 Progress Evening Thurs 5th Feb
- Year 10 Exams 20th – 25th April
- Work Experience Week Mon 23rd – Frid 27th June
- Year 10 Report June



Key Messages for success – Year 10 + 11

- Attendance
- Focus in class
- Find out what you have missed and catch up
- Work with your teacher
- Establish a positive homework routine 1.5 - 2 hours per night
- Family support



Overall School Progress 2025 + 0.56

Linking progress and attendance:

96%+ (127 students): P8 +1.14

90-95.9% (68 students): P8 +0.6

80-89.9% (20 students): P8 -0.09

50-79.9% (14 students): P8: -1.05



Work Experience 22nd – 25th June 2026



- Experience the world of work
- Explore and find out about a career you're interested in
- Develop new skills:

Resilience, Perseverance, Confidence, Independence
Communication, Teamwork...



The Castle School

ACHIEVE | BELONG | PARTICIPATE



- | | | |
|---|---|---|
|  Administration, Business and Office Work |  Financial Services |  Performing Arts |
|  Building and Construction |  Healthcare |  Personal and Other Services including hair and beauty |
|  Catering and Hospitality |  Languages, Information and Culture |  Retail Sales and Customer Services |
|  Computers and IT |  Legal and Political Services |  Science, Mathematics and Statistics |
|  Design, Arts and Crafts |  Leisure, Sport and Tourism |  Security and Armed Forces |
|  Education and Training |  Manufacturing and Production |  Social Work and Counselling Services |
|  Engineering |  Marketing and Advertising |  Transport and Logistics |
|  Environment, Plants and Animals |  Media, Print and Publishing |  ALL All Categories |

To restrict your search to a specific post code area, town or telephone code area, enter the details here and press submit before making your classification selection.

Postcode: Town: Telephone area code: Flag: Approved only ☐

ACHIEVE

BELONG

PARTICIPATE



English in Y10 and Y11

- **Where do you want to go next? Careers using English.**
- Journalism, Teaching, Marketing, HR, Civil Service, Publishing, Media, Librarianship, National Heritage and Museums, Advertising, Copy writer



2 GCSEs

English Language

English Literature

In Literature students will read:

Lord of The Flies **or** An Inspector Calls– to be studied after half term

Macbeth (Y10)

Power and Conflict Poetry – anthology (supplied by us)

Dr Jekyll and Mr Hyde **or** A Christmas Carol (Y11)



At the end of the course

- Students will sit four English papers:
- 2 for Language – each 1 hour and 45 minutes
- 2 for Literature – one is 1 hour and 45 minutes; the second is 2 hours and 15 minutes.



Speaking and Listening

This does not count towards the overall grade achieved, but must be completed to be able to receive an English Language GCSE.

All students will complete this by the end of this academic year.



Term 1:	Term 2	Term 3:	Term 4:	Term 5:	Term 6
Poetry (anthology) The first 8 poems	Modern Text – either Lord of the Flies or An Inspector Calls	Lang.Paper 1 and Paper 2	Creative writing unit then Poetry (anthology) The remaining 7 poems	PAFF writing Then Macbeth	Macbeth



Skills needed: Language

- To retrieve facts and list them
- To analyse how language is used to create effect
- To look at how authors create effect through structure
- To explore how and why characters are created and the impact that this has on the audience
- To summarise in own words
- To compare and contrast texts and explore viewpoint
- To write creatively and persuasively, using a varied and crafted range of vocabulary, punctuation, sentence and paragraph length and sentence and paragraph conjunctions.



Skills needed: Literature

- To retain quotes, character links, contextual detail and plot for all three texts and 15 poems
- To be able to explore an extract and link to the wider novel or play
- To compare poems
- To analyse unseen poems and compare them
- To be able to write full essays under time constraints using all of the skills listed above



How you can help - Language

- Ask them to read newspaper articles and explain the main points and how meaning/ viewpoint is created
- Ask them to find 4 facts in an article, and list them.
- Encourage them to expand vocabulary and to practise spelling and punctuation
- Encourage them to use sites such as:
 - BBC Bitesize
 - Spark Notes
 - Mr Bruff's videos (YouTube) are good for Language



How you can help - Literature

- Encourage your child to create maps of key quotes and display them in bedrooms
- Ask them to explain plots of texts being studied and how they link to context
- Encourage wider reading – books by the same authors, especially C19th, as language is significantly denser in these books
- BBC Bitesize
- Spark Notes (do not read revision guides until we have completed the readings of the texts)
- Mr Bruff's videos (YouTube) are good for Literature

For each text, we have created these sheets which will be put on Arbor as we read the text. Cut them out into individual images with the quote.

Get your child to learn the quotes with the images.

Then, fold the quote back and just show the image and ask them to recount the quote.

Muddle the words in the quotes and ask your child to correct the order.

Say the quote but miss out a word – ask your child which word is missing.

Keep the quotes in 3 piles:

1st – quotes being learnt

2nd – quotes more confident with but not secure

3rd – quotes which are secure.

You could also ask them to link to the context of the text.



Under loves heavy
burden do I sink.



O she doth teach
the torches to burn
bright



Is she a Capulet? O
dear account! My
life is my foe's debt.



Gentle Mercutio,
put thy rapier up.



Thy beauty hath
made me
effeminate



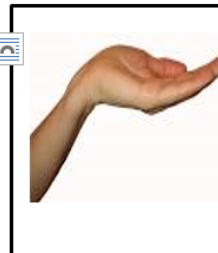
Fire eyed fury be
my conduct now!



He that hath the
steerage of my
course, direct my
sail



It is the east and
Juliet is the sun.
Arise fair sun and kill
the envious moon.



If I profane with
my unworhiest
hand.



Shake the yoke of
inauspicious stars
from this world



Absence and homework

- Please make sure that your child emails their class teacher to find out what they have missed – they will be expected to catch up.
- Homework will be set twice every week, please make sure that your child is completing this: it's always on Arbor.



If you are worried

Please either phone or email your child's class teacher in the first instance.



GCSE Maths

MATHEMATICS

is not about
numbers, equations,
computations, or
algorithms:
it is about
UNDERSTANDING.

William Paul Thurston



Key points

- GCSE curriculum
- Class work and homework
- Great habits to encourage now



Exam board - AQA

THREE written exams

Paper 1 Non calculator (80 marks) $1\frac{1}{2}$ hours

Paper 2 Calculator (80 marks) $1\frac{1}{2}$ hours

Paper 3 Calculator (80 marks) $1\frac{1}{2}$ hours



There are 2 tiers of entry, Higher or Foundation.
Each tier covers a different range of grades:

Higher	9	8	7	6	5	4	3		
Foundation					5	4	3	2	1

End of year 10: decisions start to be made about tier of entry

It is important that pupils are working hard on classwork, homework and exam revision from the start of year 10.

Yr 11 mock exams: further tier review



The Castle School
ACHIEVE | BELONG | PARTICIPATE



What to expect in Year 10 and 11

ACHIEVE

BELONG

PARTICIPATE



Homework

- Two homeworks every week
 - Sparx teacher task
 - Task set by class teacher – could be a worksheet or a Dr Frost task
- Homework will be on 'Arbor'.



Assessments

- YEAR 10

- Pre-tests to check for gaps
- End of unit tests to assess core skills with feedback provided
- Exam-style assessments
 - January
 - April
- Revision lists will be given out
- Exam feedback PLC linked to www.corbettmaths.com
- Expectation to action weak areas

- YEAR 11

- 2 Mock exams November and March
- Exam feedback PLC linked to www.corbettmaths.com
- Expectation to action weak areas
- Revision sessions



Great habits to encourage now

- Practise revision techniques with homework – watch video, make notes, do questions
- Bring a scientific calculator & maths equipment to every lesson
- Work through weak topics on Corbettmaths (identified from feedback sheets or online quizzes) or Dr Frost Maths or Sparx
- Revision using online resources and/or workbooks
- Prepare for all assessments, encourage a revision timetable

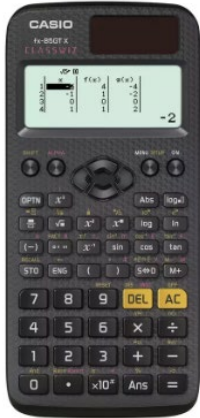


Useful websites for practice & revision:

- Sparx (independent learning)
- Corbettmaths
- Dr Frost Maths
- Maths Genie



AVAILABLE FROM STUDENT RECEPTION



Casio Scientific Calculator: £9.75

Pencil case with
maths equipment: £2





The Castle School
ACHIEVE | BELONG | PARTICIPATE



Why study maths?

MATHS
Matters....

statistics

transport

engineering

IT

graphics

food technology

media

computer games

environment

medicine

teaching

finance

IT ALL ADDS UP TO A GREAT CAREER find out more at
<http://www.mathscareers.org.uk>

ACHIEVE

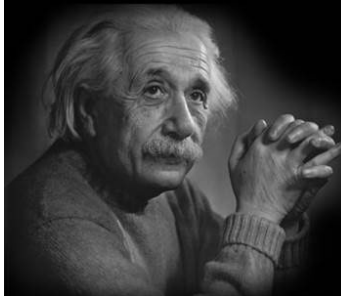
BELONG

PARTICIPATE



GCSE Sciences

**The whole of science is
nothing more than a
refinement of everyday
thinking.**



Albert Einstein
German Theoretical-Physicist
(1879-1955)

QuoteHD.com



Key information:

The exam board for sciences at the Castle School is Edexcel.

All examinations are terminal- taken at the end of Year 11.

No Controlled Assessment Tasks- 100% examination assessed.

Foundation tier will cover grades 1–5. Higher tier will cover grades 4–9.





What are the routes?

There will be two routes in GCSE sciences that students can take:

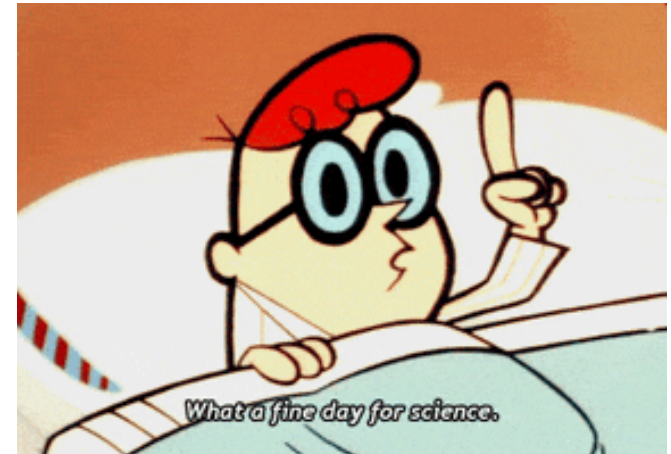
1 GCSE (9-1) Combined Sciences (double award)

- The majority of pupils will follow this route.

2: GCSE (9-1) Separate Sciences

- GCSE (9-1) Biology
- GCSE (9-1) Chemistry
- GCSE (9-1) Physics

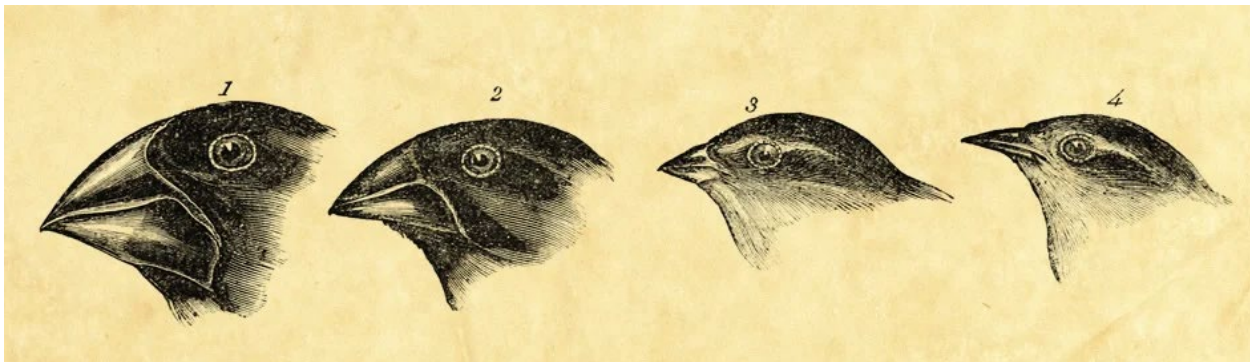
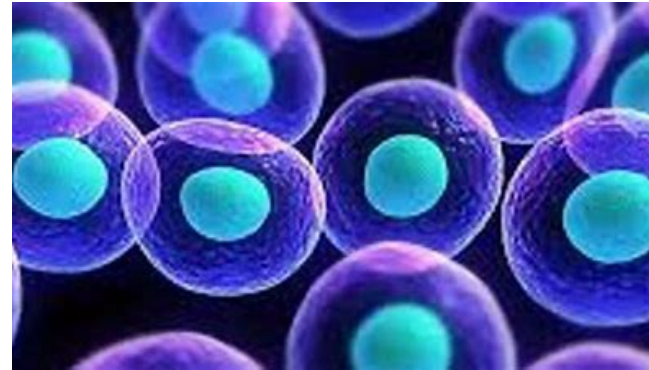
Note: There will be no single GCSE Science option.





Biology topics you will study in year 10:

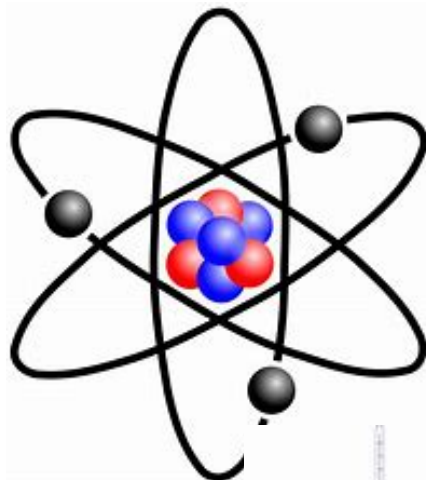
- Key concepts in Biology
- Cells and control
- Genetics
- Natural selection and genetic modification
- Health and disease





Chemistry topics you will study in year 10:

- States of matter
- Atomic structure
- The periodic table
- Bonding
- Acids and alkalis
- Calculations involving masses





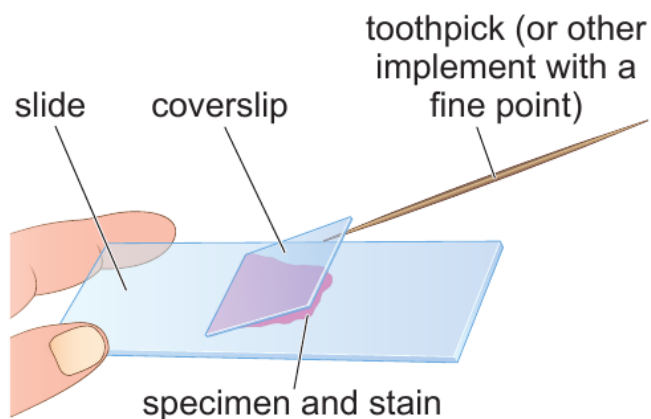
Physics topics you will cover in year 10:

- Motion
- Forces
- Energy
- Waves
- Light and the electromagnetic spectrum

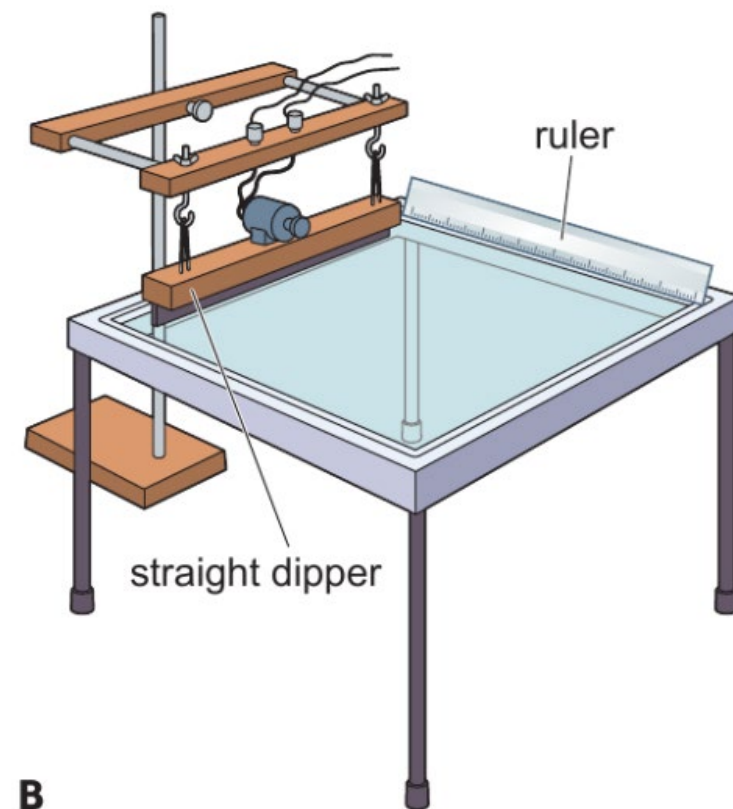
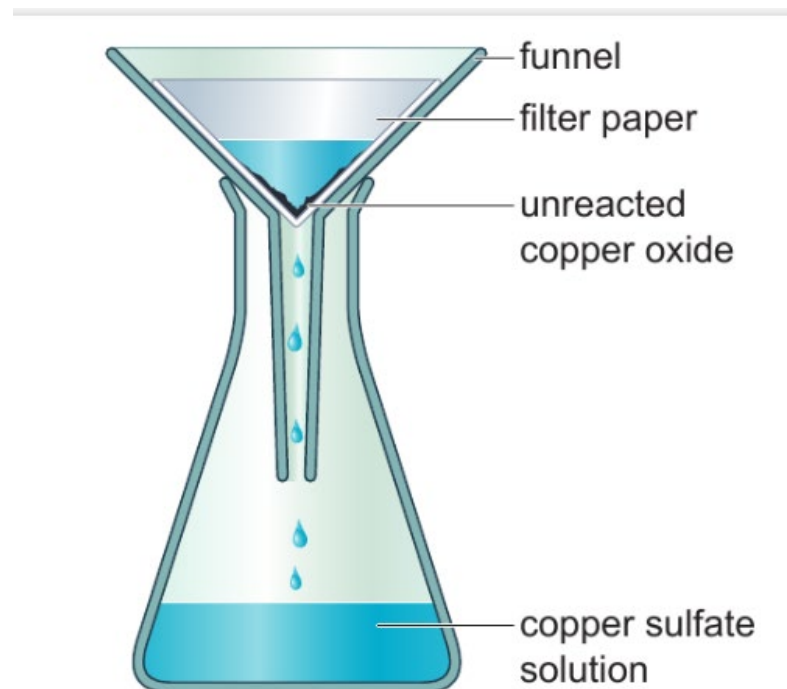




You will take part in a range of important **core practical tasks** in Biology, Chemistry and Physics



B Lowering a coverslip slowly and carefully means a slide is less likely to contain air bubbles.





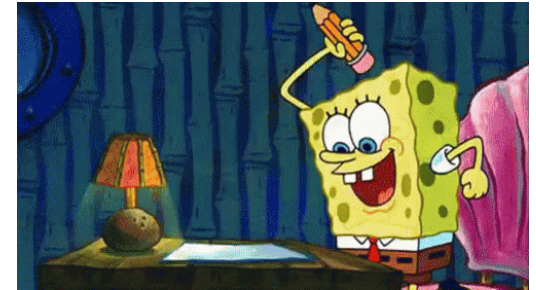
Homework- expectations

1 piece set every week

Posted on *Arbor* with appropriate resources attached.

Good homework should:

- Consolidate classwork from that week
- Promote independent work
- Provide opportunities for tackling questions alone.





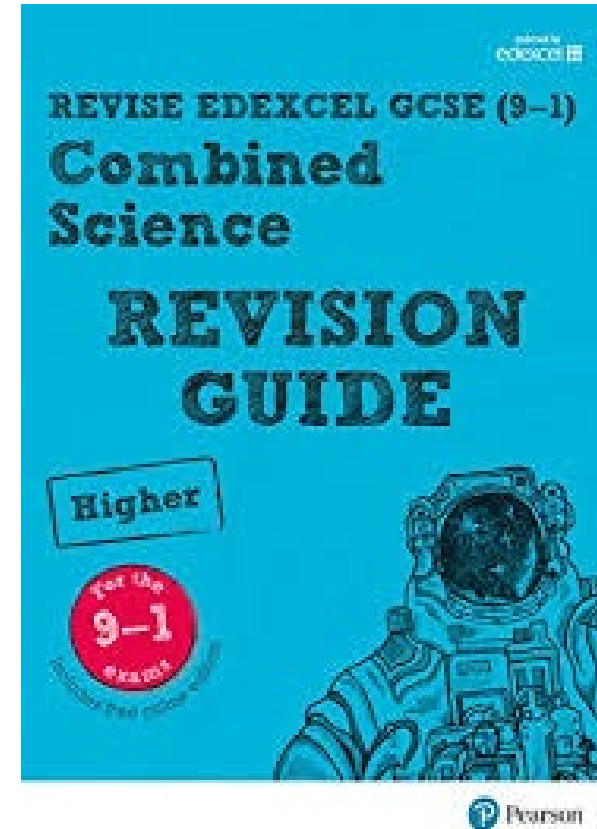
Assessment

- Continual, informal assessment of learning in lessons and the books. Teachers will use this to record and address individual and whole-class misconceptions or gaps in knowledge.
- Smaller Edexcel exam-style tests. These are used by us to track progress- at end of each module- taken in lessons.
- **Year 10 Pre-Public Exam (March). Actual Edexcel GCSE exam paper. Taken in first module taught (Sept-Nov) highlighting the need for thorough revision. Very good picture of progress made.**



Effective revision

Revision guides and workbooks will be available to purchase from school for combined and separate routes. These are an excellent resource.





Want to get a head start?

- Go on BBC bitesize to look at the activities and quizzes (Edexcel):
<https://www.bbc.co.uk/bitesize/examspecs/zqkww6f>
- Brilliant short videos and other resources on YouTube- **Cognito** channel.
- Read books or magazines or watch quality documentaries on topics you are interested in. Your science teacher will be happy to recommend some.
- Go on to: <https://www.stem.org.uk/home-learning> and click on 'Secondary Biology, Chemistry or Physics' for fun activities you can get involved in.



The Castle School
ACHIEVE | BELONG | PARTICIPATE



**BLACKDOWN
EDUCATION
PARTNERSHIP**

Where can science take you?



ACHIEVE

BELONG

PARTICIPATE