

PREPARING FOR YOUR MATHS GCSE



KEY DATES

PPEs

Paper 1 (Non-calculator): 27 Feb

Paper 2 (Calculator): 1 March

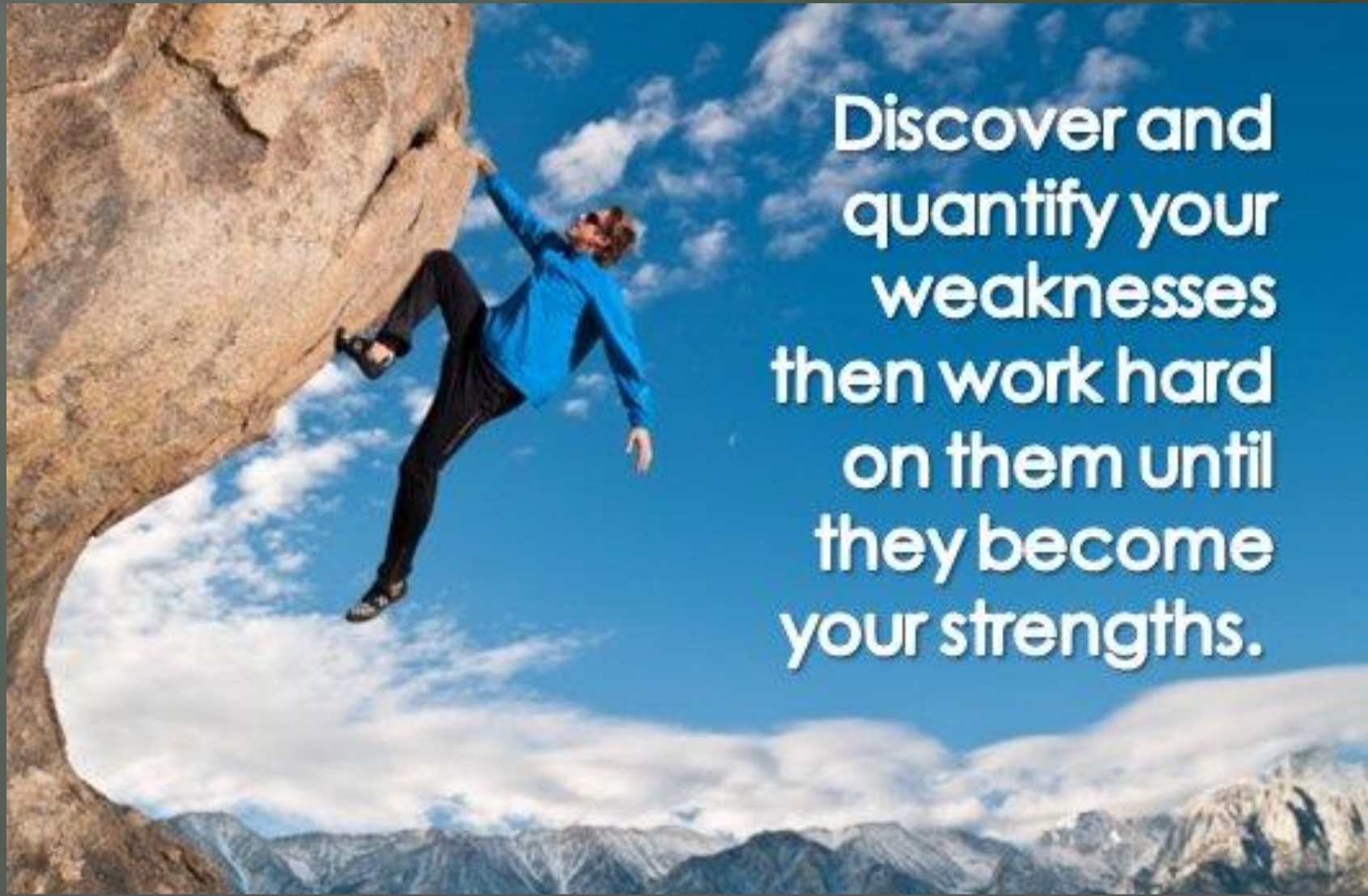
Paper 3 (Calculator): 4 March

GCSEs

Paper 1 (Non-calculator): 24 May

Paper 2 (Calculator): 7 June

Paper 3 (Calculator): 12 June



**Discover and
quantify your
weaknesses
then work hard
on them until
they become
your strengths.**

DO THE PRACTICE PAPERS IDENTIFY YOUR WEAK TOPICS

PLC FROM YOUR TEACHER

Question Level Breakdown:

Paper 1	Total Marks	% Marks achieved	Paper 2	Total Marks	% Marks achieved	Paper 3	Total Marks	% Marks achieved
1	100%	100%	1	100%	100%	1	100%	100%
2	100%	100%	2	100%	100%	2	100%	100%
3	100%	100%	3	100%	100%	3	100%	100%
4	100%	100%	4	100%	100%	4	100%	100%
5	80%	100%	5	100%	100%	5	100%	100%
6	100%	100%	6	100%	100%	6	100%	100%
7	100%	100%	7	87%	100%	7	100%	100%
8	100%	100%	8	100%	100%	8	100%	100%
9	100%	100%	9	100%	100%	9	100%	100%
10	100%	100%	10	100%	100%	10	100%	100%
11	100%	100%	11	100%	100%	11	100%	100%
12	87%	100%	12	100%	100%	12	100%	100%
13	100%	100%	13	100%	100%	13	100%	100%
14	100%	100%	14	100%	100%	14	100%	100%
15	80%	100%	15	100%	100%	15	100%	100%
16	100%	100%	16	100%	100%	16	100%	100%
17	100%	100%	17	100%	100%	17	100%	100%
18	100%	100%	18	100%	100%	18	100%	100%
19	80%	100%	19	100%	100%	19	100%	100%
20	100%	100%	20	100%	100%	20	100%	100%
21	100%	100%	21	100%	100%	21	100%	100%
22	100%	100%	22	100%	100%	22	100%	100%
23	100%	100%	23	100%	100%	23	100%	100%
24	100%	100%	24	100%	100%	24	100%	100%
25	100%	100%	25	100%	100%	25	100%	100%
26	100%	100%	26	100%	100%	26	100%	100%
27	100%	100%	27	100%	100%	27	100%	100%
28	100%	100%	28	100%	100%	28	100%	100%
29	100%	100%	29	100%	100%	29	100%	100%
30	100%	100%	30	100%	100%	30	100%	100%

the bottom of this analysis page to view all skill definitions

	Last accessed	..S1..	..S2..	..S3..	..S4..	..S5..	..S6..	..S7..	..S8..
P	16.09.15	0/4	0/4	0/4	0/2	0/2	0/1	0/2	0/2
GC	0	0/4	0/4	0/4	0/2	0/2	0/1	0/2	0/2
ENC	16.09.15	2/4	1/4	2/4	0/2	0/2	0/1	0/2	0/2
	0	0/4	0/4	0/4	0/2	0/2	0/1	0/2	0/2
	16.09.15	3/4	2/4	1/4	1/2	0/2	0/1	0/2	0/2
	16.09.15	0/4	0/4	0/4	0/2	0/2	0/1	0/2	0/2
RM	16.09.15	4/4	3/4	0/4	0/2	2/2	1/1	0/2	0/2
ANW	16.09.15	3/4	3/4	4/4	0/2	0/2	0/1	0/2	0/2
NGE	16.09.15	3/4	4/4	1/4	0/2	0/2	0/1	0/2	0/2
	0	0/4	0/4	0/4	0/2	0/2	0/1	0/2	0/2
L	16.09.15	4/4	3/4	0/4	0/2	0/2	0/1	0/2	0/2
YL	0	0/4	0/4	0/4	0/2	0/2	0/1	0/2	0/2
	0	0/4	0/4	0/4	0/2	0/2	0/1	0/2	0/2
	0	0/4	0/4	0/4	0/2	0/2	0/1	0/2	0/2

PIXL MATHS APP

CONCENTRATE YOUR EXAM PRACTICE ON WEAK TOPICS

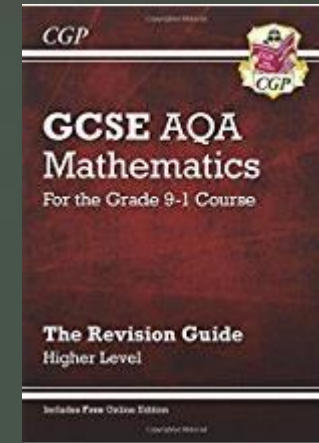
HOW TO IMPROVE ON YOUR WEAK TOPICS



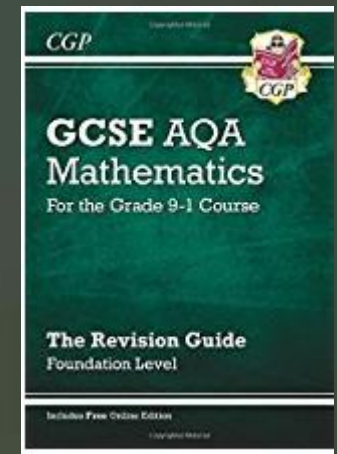
The Corbettmaths videos



PIXL Therapy videos



Your Revision Guide



Attend extra Maths revision

DO A VARIETY OF QUESTIONS ON WEAK TOPICS

Maths revision is not a
spectator sport



MARK YOUR WORK - MAKE SURE YOU ARE IMPROVING

TARGETED REVISION AT HOME

SETS 3 REVISION

HOMework 4

BEST BUYS: [Corbettmaths videos: 210](#)

INDICES: [Corbettmaths videos 172,173,174,175](#)



REVIEW

Maths4Everyone.com
Enjoy • Improve • Succeed

ALGEBRAIC FRACTIONS

ADDITION AND SUBTRACTION

Ref: G282. 1R1

A1 Simplify $\frac{x}{5} + \frac{3x}{4}$	A2 Simplify $\frac{3x}{2} - \frac{5x}{6}$	A3 Simplify $\frac{x+3}{5} + \frac{x-5}{4}$	A4 Simplify $\frac{2x-1}{3} - \frac{2}{5}$
B1 Simplify $\frac{4}{x-1} + \frac{3}{x+1}$	B2 Simplify $\frac{3}{x+1} - \frac{6}{2x+3}$	B3 Simplify $\frac{3}{2x-3} - \frac{1}{x+2}$	B4 Simplify $\frac{3}{x-1} - \frac{2}{x}$
C1 Simplify $\frac{2}{x-1} + \frac{x-11}{x^2+3x-4}$	C2 Simplify $\frac{2}{x+2} + \frac{x}{x^2+5x+6}$	C3 Simplify $\frac{2}{x-1} + \frac{x}{x^2-4x+3}$	C4 Simplify $\frac{5}{2x-6} - \frac{x+2}{x^2-4x+3}$
D1 Simplify $1 + \frac{4}{(x+3)(x-2)}$	D2 Simplify $1 + \frac{x^2+x-6}{(x+4)(x-2)}$	D3 Simplify $2 + \frac{5-x}{x^2-2x-15}$	D4 Simplify $5 - (x+2) + \left(\frac{x^2-4}{x-3}\right)$

REVISION SESSIONS

Set 1 Mrs Sully:	Wed lunch	S13
Set 1 Mr Pitts:	Wed lunch	S2
Set 2 Miss Gee:	Tues & Thurs am reg	S13
Set 2 Mrs Davis:	Thurs lunch	S12
Sets 3 & 4:	Wed after school	various
Sets 5:	Wed after school	S4
Open session	Wed after school	S11

Don't practise until you get it
right - practise until you can't
get it wrong!

MAKE FLASH CARDS TO REMEMBER KEY FACTS, WORDS & FORMULAE

Quadratic Formula:
 For $ax^2 + bx + c = 0$,

$$x = \frac{-b \pm \sqrt{b^2 - 4ac}}{2a}$$

MathBits.com

	0°	30°	45°	60°	90°
sin θ	0	$\frac{1}{2}$	$\frac{\sqrt{2}}{2}$	$\frac{\sqrt{3}}{2}$	1
cos θ	1	$\frac{\sqrt{3}}{2}$	$\frac{\sqrt{2}}{2}$	$\frac{1}{2}$	0
tan θ	0	$\frac{\sqrt{3}}{3}$	1	$\sqrt{3}$	$\pm \infty$

Sine Rule

$$\frac{a}{\sin A} = \frac{b}{\sin B} = \frac{c}{\sin C}$$

$$\frac{\sin A}{a} = \frac{\sin B}{b} = \frac{\sin C}{c}$$

Cosine Rule

$$a^2 = b^2 + c^2 - 2bc \cos A$$

$A^2 + B^2 = C^2$

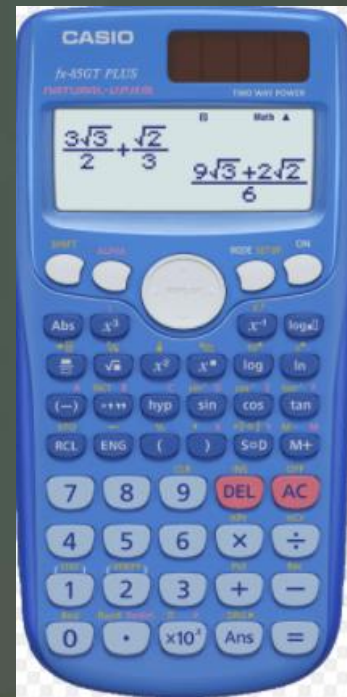
Area of a circle
 = $\pi \times \text{radius}^2$

Circumference of a
 circle = $\pi \times \text{diameter}$

remember that the
diameter = 2 x radius

EQUIPMENT

- Pen, pencil ruler, protractor, compasses, calculator(check it's on 'D')



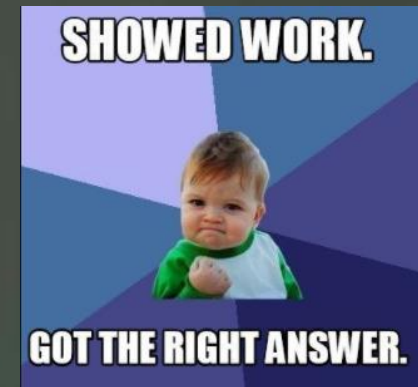
TIPS FOR THE EXAM

need-to-know formulae
www.edexcel.com/gcsemathsformulae

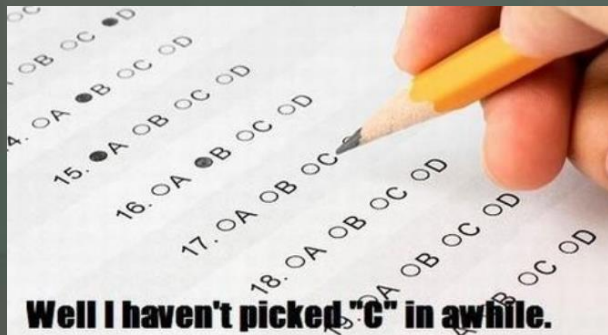
Areas	Volumes
Rectangle = $l \times w$	Cuboid = $l \times w \times h$
Parallelogram = $b \times h$	Piston = area of cross section \times length
Triangle = $\frac{1}{2} b \times h$	Cylinder = $\pi r^2 h$
Trapezium = $\frac{1}{2}(a+b) \times h$	Pyramid = $\frac{1}{3} \times$ area of base $\times h$
Circles Circumference = $2\pi r$ (radius) $C = \pi d$ (diam) Circumference = $2\pi r \sin \theta$ (radius $C = 2r \sin \theta$) Area of a circle = πr^2 (radius) $A = \pi r^2$	Compound measures Speed = $\frac{\text{distance}}{\text{time}}$ Density = $\frac{\text{mass}}{\text{volume}}$ Pressure = $\frac{\text{force}}{\text{area}}$
Pythagoras Pythagoras' theorem: For a right-angled triangle, $a^2 + b^2 = c^2$	Trigonometric formulae Sine Rule: $\frac{a}{\sin A} = \frac{b}{\sin B} = \frac{c}{\sin C}$ Cosine Rule: $a^2 = b^2 + c^2 - 2bc \cos A$ Area of triangle = $\frac{1}{2} ab \sin C$
Quadratic equations The Quadratic Equation: The solutions of $ax^2 + bx + c = 0$, where $a \neq 0$, are given by $x = \frac{-b \pm \sqrt{b^2 - 4ac}}{2a}$	

Write down the key formulae when you get in

Show clear & well laid-out method to gain method marks



Highlight key info in the question



NEVER miss out a multiple choice (but you do need to work stuff out)

1 mark = 1 minute: don't spend too long on one question. Move on and come back to it.

