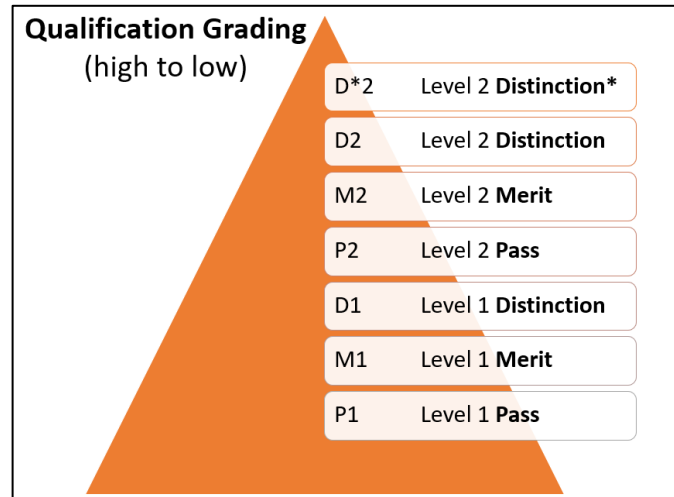
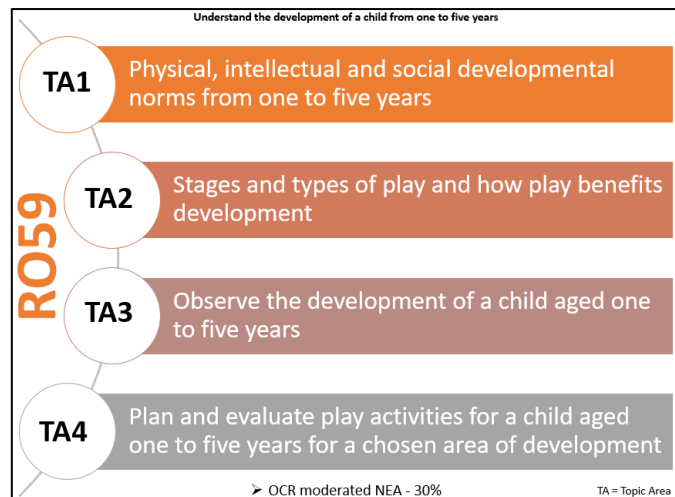
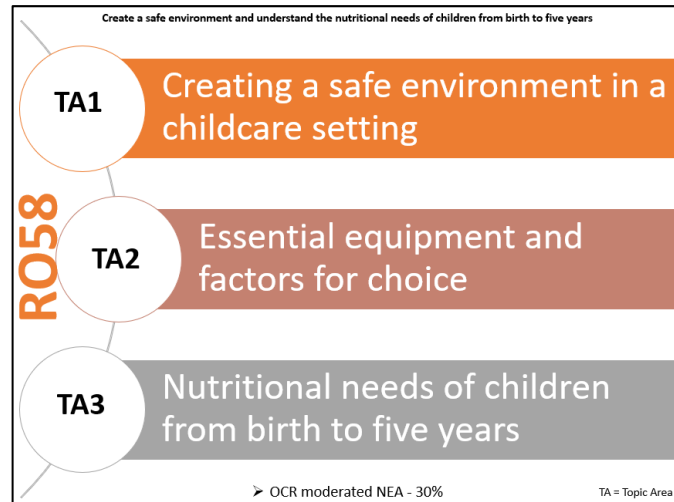
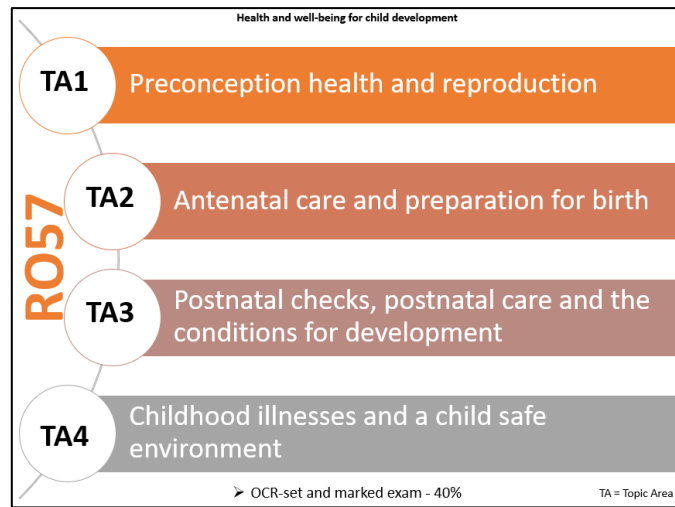


Child Development – an overview

Course plan (2023-2025)

	Autum 1	Autumn 2	Spring 1	Spring 2	Summer 1	Summer 2
Yr10	RO57: TA1	RO57: TA2	RO57: TA3	RO57: TA4	Yr 10 exam and NEA 1 (RO58 prep)	Start NEA 1 (RO58) - titles released 1st June each year
Yr11	Sept: complete NEA 1 (RO58) October: start NEA 2 (RO59)	Complete NEA 2 (RO59)	Jan: submit NEA 1 (RO58) Start exam (RO57) revision	Exam (RO57) Revision	Final revision May/ June 2025: submit NEA 2 (RO59) and take final exam (RO57)	

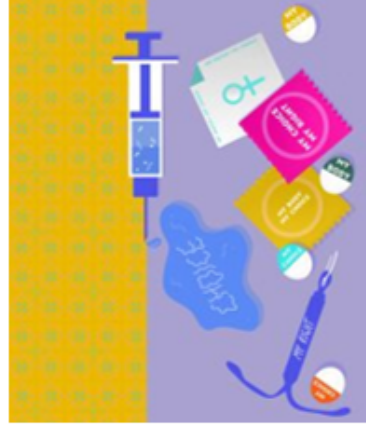
NEA = Non Examination Assessment - marked and moderated by teachers, marks submitted and a sample requested by exam board.



RO57: Health and well-being for child development

TA1

Pre-conception health and reproduction



- Factors affecting pre-conception health for men and women
- Other factors affecting the preconception health for women
- Types of contraception methods and their advantages and disadvantages
- The structure and function of the reproductive systems
- How reproduction take place
- Signs and symptoms of pregnancy

TA2

Antenatal care and antenatal clinics



- The purpose and importance of antenatal clinics
- Screening and diagnostic tests
- The purpose and importance of antenatal (parenting) classes
- The choices available for delivery
- The role of birth partner in supporting the mother through pregnancy and birth
- The methods of pain relief when in labour
- The signs that labour has started
- The three stages of labour and their physiological changes
- The methods of assisted birth

TA3

Postnatal checks, postnatal care and the conditions for development



- Postnatal checks
- Postnatal care of the mother and baby
- The developmental needs of children from birth to five years



TA4

Childhood illnesses and a child safe environment



- Recognise general signs and symptoms of illness in children
- How to meet the needs of an ill child
- How to ensure a child-friendly safe environment

These units are what you will be examined on at the end of the course – the exam is **1 hour 15 mins** (plus any extra time you are entitled to)